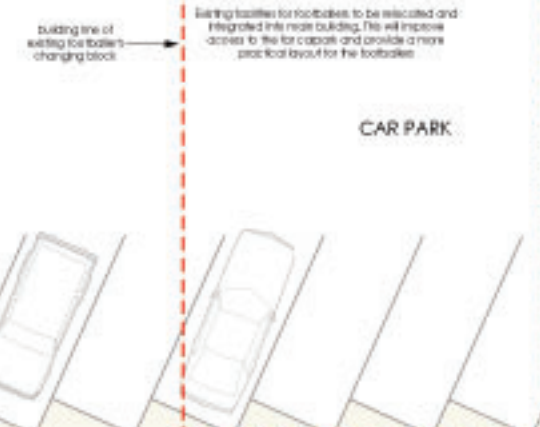


GROUND FLOOR PLAN

TO MAIN CAR PARK

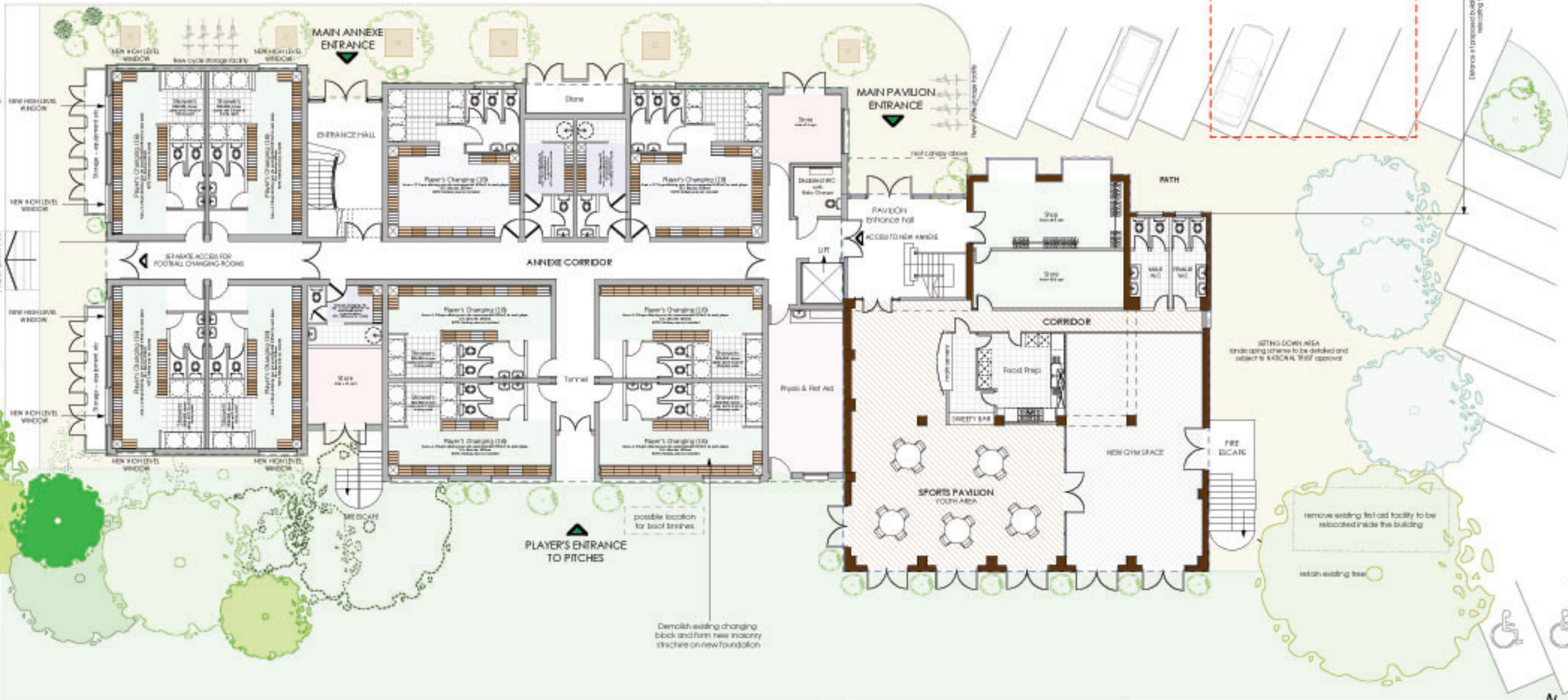
LANDSCAPING SUBJECT TO DETAILED SCHEME IN ACCORDANCE WITH THE NATIONAL TRUST DESIGN TEAM RECOMMENDATIONS

RAMP TO MORE CAR PARKING



CAR PARK

25 METERS
 Distance if proposed building line to rear boundary is increased by relocating the footbikes facility.



- GREEN DOTTED LINE SHOWS EXTENT OF SELF-CONTAINED ANNEXE TO SPORT PAVILION
- RED DOTTED LINE SHOWS EXTENT OF THE EXISTING BUILDING FOOTPRINT
- BLUE DOTTED LINE SHOWS EXTENT OF THE SPORT PAVILION BUILDING TO BE RETAINED



LANDSCAPING SUBJECT TO DETAILED SCHEME IN ACCORDANCE WITH THE NATIONAL TRUST DESIGN TEAM RECOMMENDATIONS

drawing notes:
 This Drawing must not be scaled. Any figured dimensions should be used. Large Scale Drawings are to be enlarged to actual scale. Drawings in case of discrepancy, this Drawing should not be used for tenders. This Drawing should not be used in relation to other drawings, if they are in any way inconsistent with this Drawing. Any alterations to this Drawing should be made in accordance with the National Trust Design Team Recommendations. The Drawing and the information contained therein are the copyright of the Architects, and must not be reproduced in part or whole, or disclosed to third parties, unless agreed in writing with Husband & Carpenter Architects Ltd.

project: **A NEW CHARITY ANNEXE TO THE EXISTING SPORTS PAVILION**

client: **DORKING RUGBY FOOTBALL CLUB LIMITED**

Revision notes				
date	scale	project no	drawing no	revision
AUG 2009	1:100@A1	2068	PL01	-