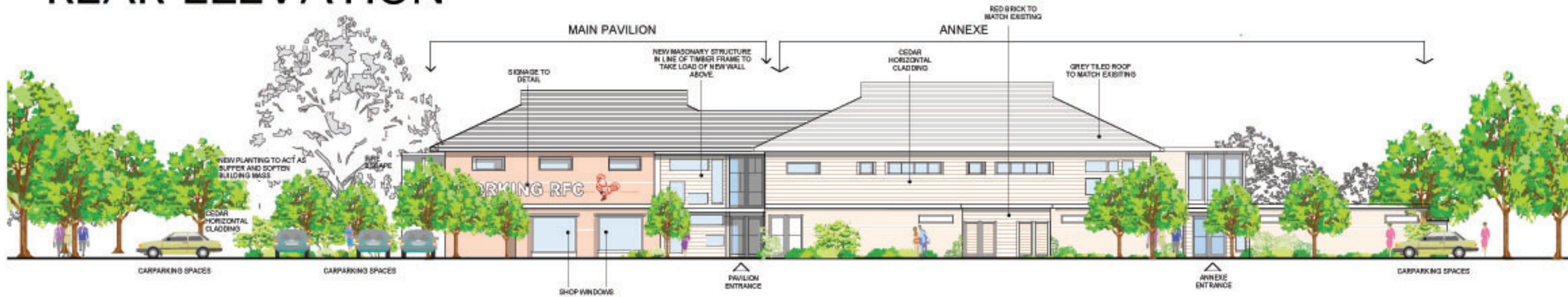


# FRONT ELEVATION



# REAR ELEVATION



**drawing notes:**  
This Drawing must not be scaled; only figured dimensions should be used. Large scale Drawings are to be preferred to small scale Drawings in case of discrepancy. This Drawing should not be used for land transfer. This Drawing should not be used in isolation. If there are any discrepancies, or contradictions between this and other information, it should be brought to the Architect's attention. Any Adjusted Building/Landscape Features shown are for illustrative purposes only and have not been formally approved for this Drawing unless noted otherwise. This Drawing and the information contained therein are the copyright of the Architects, and must not be reproduced in part, or whole, or disclosed to third parties, unless agreed in writing with Husband & Carpenter Architects Ltd.

**project:**  
A NEW CHARITY ANNEXE TO THE EXISTING SPORTS PAVILION

**client:**  
DORKING RUGBY FOOTBALL CLUB LIMITED

Revision notes:					
drawing title: PROPOSED ELEVATIONS - FRONT & REAR					
date	scale	project no	drawing no	revision	
AUG 2009	1:100@A1	2068	PL04	-	